

CSR Seminar: The social license to operate - beyond CSR compliance in mining

CSR Seminar: The social license to operate - beyond CSR compliance in mining

Wednesday, 6th February 2019, 10:30am -12:30pm

Norton Rose House – 8, Riebeeck Street, Cape Town

Program

10:30 – 11:00	Guest arrival and registration
11:00 – 10:05	Opening remarks: HE Sandra McCardell, High Commissioner of Canada
11:05 – 12:15	Panel discussion <u>Moderators:</u> Tracey Cooper , Executive Director - Mining Dialogues 360 Degrees Claude Baissac , Managing Director - Eunomix <u>Panelists:</u> Dr. Aninka Claassens , Director - Land and Accountability Research Centre (LARC/UCT) Poupak Bahamin , Co-Head of Mining, United States – Norton Rose Fulbright Dr Gavin Andersson , Director: Learning and Innovation, Seriti Institute Daniel Limpitlaw , Principal - Limpitlaw Consulting Tebello Chabana , Senior Executive: Public Affairs & Transformation - Minerals Council South Africa Glenn Mullan , President, PDAC
12:15 – 12:30	Q&A
12:30 onwards	Networking lunch

Biographies

Moderators



Tracey Cooper

Executive Director: Mining
Dialogues 360 Degrees

Tracey Cooper is a founding member and Executive Director of Mining Dialogues 360. She leads a collective of experts who produce empirical, evidence based research that provides the basis for frank and robust dialogue on socio-economic issues arising from the extractive industry with a focus on sustainable development.

Prior to this Tracey consulted in communications and outreach working with organisations such as UNDP, UNEP, Gates Foundation, IRENA, and others. She has traveled extensively in Africa working in education with international schools and development programmes.



Claude Baissac

Managing Director - Eunomix

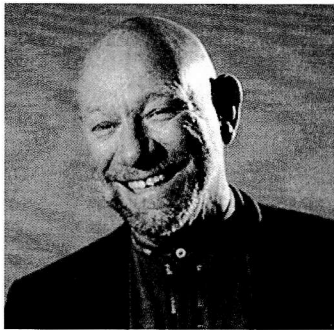
Claude is a specialist in sustainable development, growth and strategy with over 20 years of practice advising government, industry, and international organisations. His combination of expertise, at the nexus of policy, strategy and research, provides him with a unique perspective on the conditions for sustainable growth in complex societies.

One of the key thrust of his career has been the problem of diversification and industrialisation in Africa, and its impact on the crucial need for employment creation, poverty alleviation and social capital enhancement. Claude has a strong track record on the relationship between natural resources and sustainable growth, given the central role these play on the continent.

Another key thrust has been his work with corporates as a specialist in country risk management, engaging in scenario planning, strategy and proactive risk management. In 2001 Claude was acting Deputy CEO for Air Afrique, an experienced that motivated his subsequent involvement in risk management.

CSR Seminar: The social license to operate - beyond CSR compliance in mining

Panelists



Dr. Gavin Andersson
Director: Learning and
Innovation, Seriti Institute

Gavin Andersson has had a great variety of work experiences in organisational development, strengthening civil society organisations, and leadership spanning more than 20 years. He started working life as a diamond prospector for De Beers and quantity surveyor's clerk while studying for a BSc, before becoming involved in re-starting the black South African trade union movement. He was banned by the Apartheid Government in 1976.

He possesses a variety of personal skills which feed into his passion for training and capacitation, including, being a guitar teacher, experience finding his own income streams through growing vegetables and learning carpentry. He has extensive experience in and involvement in enterprise creation and civic initiatives. He was founder and co-ordinator of CORDE, which worked with community enterprises in Botswana. He later led a management consultancy, working across southern Africa and in the Caribbean. He has worked in the field of Business Social Responsibility and led the Social Impact Assessments on BP operations in Zambia, Zimbabwe and Mozambique and was peer assessor for the Tanzanian SIA exercise.

On his return to South Africa post-democracy, he led a development advocacy organization, then formed a southern African leadership network. Gavin is co-creator of Kwanda, the reality TV show on community transformation and was one of the pioneers of the Community Work Programme (CWP). He co-founded the Seriti Institute. He is a member of the Council of ICNL and was elected to the Council of both the Botswana and South African NGO Coalitions. He was a founder and member of Council of AccountAbility and later helped create the African Institute for Corporate Citizenship. He was a founder and chairman of the board of the Mmegi Publishing Trust. He is a member of the Integrated Reporting Committee chaired by Judge Mervyn King. He holds a PhD in Development Studies from The Open University in the United Kingdom. Gavin was appointed an Adjunct Professor at the UCT Graduate School of Business where he lectures in Macroeconomics and Ethics.

CSR Seminar: The social license to operate - beyond CSR compliance in mining



Poupak Bahamin

Norton Rose Fulbright: Co-Head of Mining, United States

Poupak is a corporate lawyer with an international background. She is currently based in Washington, DC, but has previously practiced in Canada and France. She advises companies involved in mining, oil and gas and agriculture on corporate and regulatory matters, the establishment of joint ventures, partnerships, mining conventions, PSAs, as well as sale and financing of assets.

Over the past few years, her practice has been focused on French-speaking sub-Saharan Africa and in particular Democratic Republic of Congo, Guinea, Mali, Ivory Coast, Senegal, Togo, Republic of Congo, Burkina Faso and Guinea Bissau. She has been recognized by Chambers Global as a DRC Foreign Expert for general business law and corporate and M&A work.

Poupak regularly contributes to mining journals, publications and conferences.

Poupak qualified in 1993, following which she obtained a Master's Degree in Law, from McGill University. She is fluent in English and French and speaks Farsi.



Tebello Chabana

Senior Executive: Public Affairs and Transformation, Minerals Council of South Africa

He is an admitted attorney with the earlier part of his career focusing on labour and commercial law. He has a career spanning c.20 years in the mining industry with experience in social development, public relations, mining policy and advocacy. He has dealt with delicate issues such as the negotiation of BEE policy and targets with various regulators and stakeholders.

His mining policy and regulatory experience traverses many commodities, local and foreign mining jurisdictions. He prides himself on seeking win-win sustainable solutions to mining industry challenges. He has successfully managed public and stakeholder relations during high profile industry litigation involving billions of Rands.



Dr. Aninka Claassens

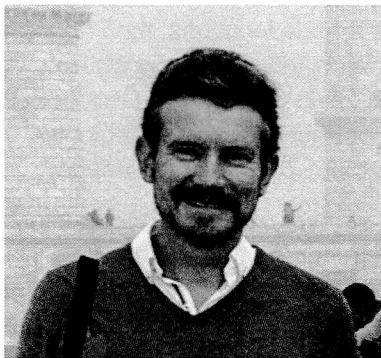
Chief Researcher: Land and Accountability Research Centre

Dr. Aninka Claassens is the former director of the Land and Accountability Research Centre (LARC) in the Faculty of Law at the University of Cape Town. She has been a land activist in South Africa for many years. She worked with communities who were resisting forced removals and farm evictions during the 1980s as part of the Transvaal Rural Action Committee (TRAC), a project of the Black Sash. She was a senior researcher at the Centre for Applied Legal Studies at Wits from 1990-1996, during which time she was a technical advisor (land rights) to the Constitutional Assembly. She was an advisor to the Ministry of Land Affairs from 1996-1999. She has provided expert support in a number of Constitutional Court cases about land rights, gender equality and traditional leadership. Aninka was a member of the High Level Panel on

CSR Seminar: The social license to operate - beyond CSR compliance in mining

(LARC)

the Assessment of Key Legislation and the Acceleration of Fundamental Change chaired by former President Kgalema Motlanthe during 2016 and 2017. She chaired the land subcomponent of the panel. Aninka holds a PhD in Development Studies and has published widely on issues of land rights, women's land rights in customary systems, customary law and power relations in the former homelands.



Dr. Daniel Limpitlaw
Principal, Limpitlaw Consulting

Dr. Daniel Limpitlaw is a mining engineer, specialised in the assessment of both direct and indirect impacts of mining on the environment and the surrounding communities. He has experience in geographic information systems and remotely sensed image processing for impact assessment and has presented courses in hazard management and environmental

impact assessment. He has conducted research into the treatment and control of acid mine drainage and has managed the underground component of a production ramp-up at a formerly closed gold mine. He was the project manager for the Mining, Minerals and Sustainable Development southern Africa project and has been involved in several mining related sustainable development projects. In the recent past, Daniel worked with the Ministry of Environment in Lebanon to develop quarry regulations and conducted a JORC-related environmental assessment of potential cyanide impacts from a gold tailings facility in Azerbaijan.

Daniel is currently working on the implementation of environmental management plans for a hydropower project in Uganda, the development of a potash mine in the Republic of Congo and a large ecological footprint assessment for a multi-commodity mining company in Saudi Arabia. This includes detailed greenhouse gas accounting and the preparation of materials for use by company personnel to track future performance.

He has experience of mining projects in a range of African and Middle Eastern countries as well as in Australia and the Pacific. He works on projects relating to small scale mining, mine closure, management of mining impacts, spatial assessment and local economic development. Daniel was previously the technical services manager at Vatukoula Gold Mines Ltd and the director of the Centre for Sustainability in Mining and Industry at the University of the Witwatersrand. He has a niche consulting practice specialising in analysis of, and solutions to problems around sustainability in the mining and minerals sector.

CSR Seminar: The social license to operate - beyond CSR compliance in mining



Glenn Mullan

President, Prospectors & Developers Association of Canada (PDAC)

Glenn Mullan is the 36th President of the Prospectors & Developers of Canada (PDAC). He has been a PDAC member for over 40 years and a long-time volunteer for the organization.

Over his +40-year career, Glenn has followed a traditional exploration and prospecting path. He began with contract geophysical surveys, where he caught the bug for being in the North and working in remote locations, then began prospecting and staking mining claims independently while completing his B.Sc. in Geology and Earth Sciences at Concordia University. He later conducted contract exploration geological services, mostly located in Northern Ontario and Québec.

Glenn would go on to broker numerous prospector/vendor transactions with arms-length public companies, and form a public company in 1999 that evolved into Ni-Cu-PGE producer that currently employs more than 300 people in Northern Québec. Glenn has a broad spectrum of industry-related experience—across Canada and Africa—including early-stage acquisitions and exploration through PEA, BFS, permitting and mine development-stages, as well as CSR initiatives, financing and corporate development. That said, he much prefers early-stage grassroots exploration in remote locations and near his home base in Val-d'Or, Québec. Currently, Glenn serves as President and CEO of Golden Valley Mines Ltd, where his main area of interest continues to be grassroots early-stage exploration, primarily for base and precious metals in Canada and abroad.